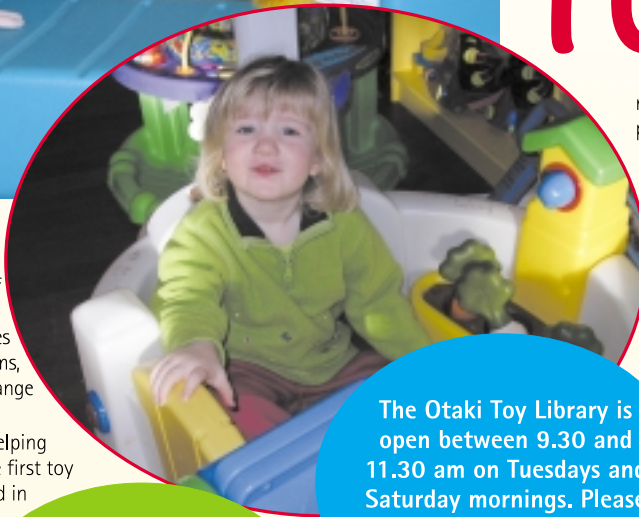




giving you electricity sales discounts
Electra

Caring for Our Community

**TOYS...
TOYS...
TOYS...**



Mention libraries in discussion and we almost always think of books. But over time interest groups have established facilities to store other items such as films, records, and tapes – indeed a range of things, including toys.

Toys are a major element in helping children to play and learn. The first toy lending library was established in Los Angeles 70 years ago and is still operating today.

Other countries soon followed suit and New Zealand joined the growing list in 1972 when planning started for a special needs toy library, which was opened two years later.

Today New Zealand has 220 non-profit toy libraries.

Recently some public libraries have started toy libraries on their premises. They provide toys for enjoyment or as a means of introducing a child

Paraparaumu Toy Library hours are Monday, Wednesday and Saturday morning between 9.30 and 11.30 and Thursday evenings 7 to 8. For further information telephone 905-1790.

The Otaki Toy Library is open between 9.30 and 11.30 am on Tuesdays and Saturday mornings. Please call Kiri on 364-0134 for further information.

Levin's Community Toy Library is open every Tuesday and Wednesday from 10.30am – 11.30am and every second Wednesday from 6.30pm – 7.30pm. The contact number is Levin 367-8583.

to books. A book can be loaned along with a toy, which relates to the story, so building a relationship between the two.

Toy libraries are not necessarily for children only. Families can borrow toys or games suitable for them all to play with. With toys often being expensive and beyond the

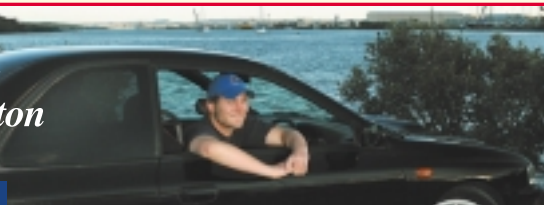
means of some families, these special libraries provide a selection of toys, games and equipment. There are three toy libraries on the Kapiti Coast. Paraparaumu was the first Kapiti-Horowhenua town to open a toy library in 1978. There are currently 135 families linked to the library, which is administered by a committee of eight volunteers under the joint leadership of Sandra Knight and Shona Atkinson.

The president of the Levin toy library is Hannah Rowan who, with her committee of eight looks after the interests of 50 members, among them parents and grandparents who hire toys for their grandchildren. Levin, like other toy libraries relies on grants and sponsorships from organisations such as the T G McCarthy Trust and Lotto to meet the costs of buying toys.

It is 11 years since the Otaki toy library was opened.

Kiri Beggs and her team of seven volunteers and other members of the community, enjoy the relationships they develop with families who make a lot of calls on the wonderful range of toys available.

Oxford Finance Corporation Limited



**Buying a car, van, 4 x 4 or wagon?
Looking for finance?
We can help...
Call Rochelle or Annelies on:
0800 263 264**

This page is proudly sponsored each fortnight by Electra and its subsidiary companies. www.electra.co.nz

LINE WORK
POWER CONTRACTORS
Providers of electricity lines services

Oxford Finance Corporation Limited
Phone 0800 263 264 We can finance your next vehicle

Stones
ELECTRICAL CONTRACTORS